

Keresley Newland Growing.....

Spring Term One 2019.....

Work is well underway now to transform the school allotment growing space with the aim of not only returning it to its former position but also to further develop and enhance the growing area.....
Follow the developments.....



Year three children busy in the school allotment.....

To date the Year three children have sown Lambs Lettuce seeds, they have also sown Broad Beans, they have planted garlic and winter onions. All of these crops have been carefully chosen to grow during the colder winter weather and have established themselves and are growing well.....
Below you can see some of these crops that are growing.....

Broad Beans.....



Lambs Lettuce.....



Winter Onions.....



Garlic.....



All of these crops will grow slowly through the winter months, indeed it is said that garlic will have a stronger taste if it exposed to cold, frosty weather.....

Lots of growing area preparation taking place.....

Unfortunately the school allotment area has been sadly neglected but renewed effort will soon get this growing space back in order. Lots of weeding and general soil preparation is taking place in readiness to grow lots of crops come the spring.....



More preparation work.....



Poly tunnels not in the best of shape.....

Again, due to neglect and of course some of the high winds we have experienced in recent months, the two poly tunnel areas are in need of some repair work and also some clearance work too – the raised beds inside the two tunnel areas can be utilised, indeed we can look at setting up some cloche protection over these beds.....



More Year Three growing work.....

After a period of rain particularly during the winter when the sun has little or no warmth, this creates soil conditions that are wet and very heavy to work on, so what we have done is start off some more crops in pots and seed modules so that we can then plant out these crops out when the weather conditions improve..... We have planted lots more garlic in pots, plus some peas have been sown in seed modules and then they have been kept inside the cold frames we have on the allotment, this gives them a bit of protection from the cold plus this will hopefully keep the squirrels from scratching up these plants.....

Peas have germinated..... Garlic planted in pots.....

Below you can see the peas that we have sown in the seed modules have just started to germinate.....

Garlic will grow equally well in pots as it will in the ground. When the ground is too wet, it is not only difficult to work the soil plus garlic will have a tendency to rot if it is planted into really wet and soggy soil.....



Anenomes.....



Poly tunnel beds weeded and dug over.....



Here you can see that there is plenty of weeding and tidying up to do in this tunnel..

Strawberry bed dug over



Rhubarb bed weeded.....



Lots of growing bed preparation being done.....



Remin Rockdust.....



Here we are preparing our growing beds by adding Remin Volcanic Rockdust which replaces all of the trace elements and nutrients back into the soil. Basically when you grow anything, the more crops you grow, the more these crops will take out of the soil so unless you replace the nutrients you end up with poor soil bereft of nutrients and poor tasting crops.....



Peas growing well in the cold frame.....



Broad Beans and Garlic frosted



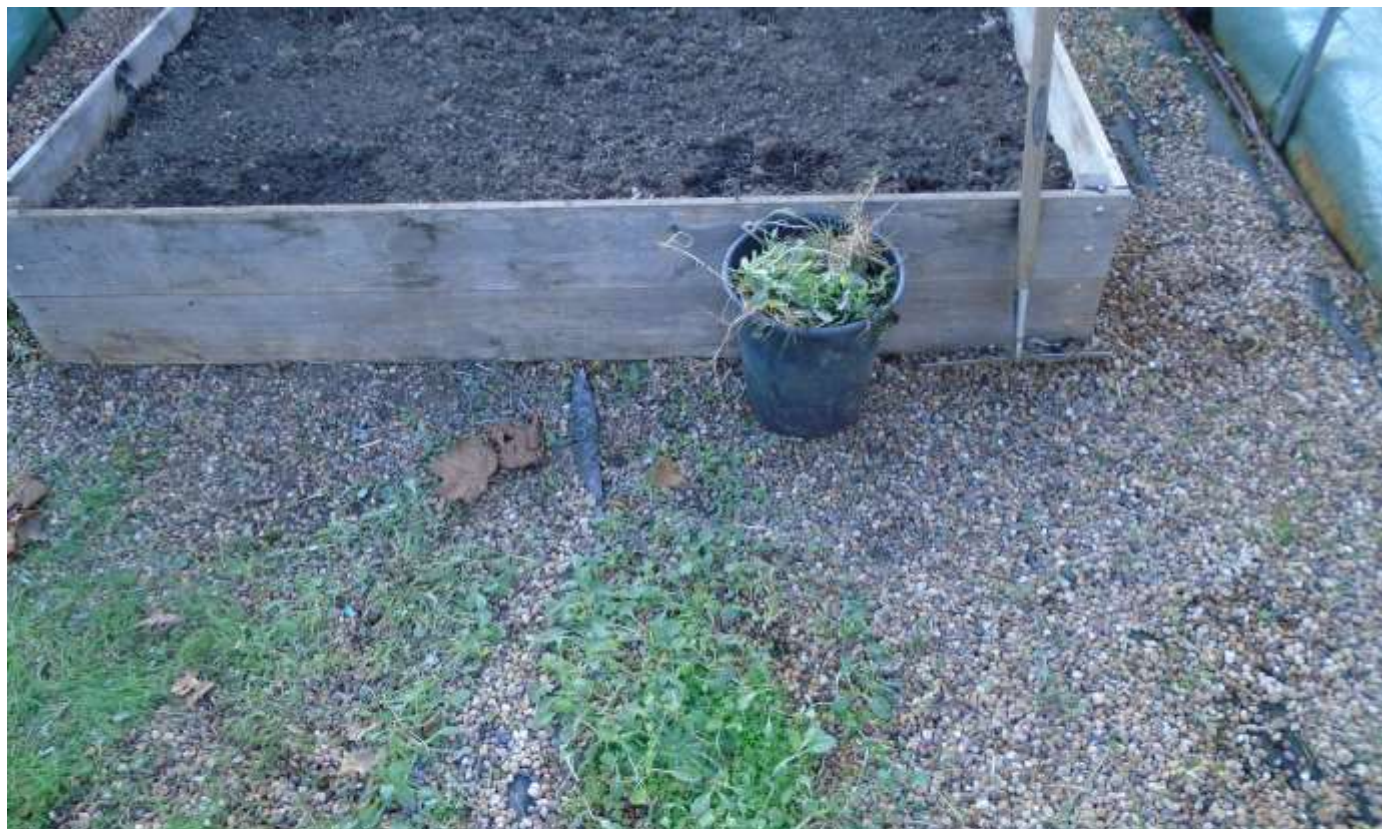
Hedge ready for pruning.....



Hedge pruned
and tidy!!

Second poly tunnel ready for clearance.....

Before.....



After.....



Fruit trees pruned during winter dormancy period.....



Year Three daffodils flowering at school frontage.....

The daffodil bulbs planted by the Year Three children have all started to come into flower giving us a reminder that spring is approaching fast.....

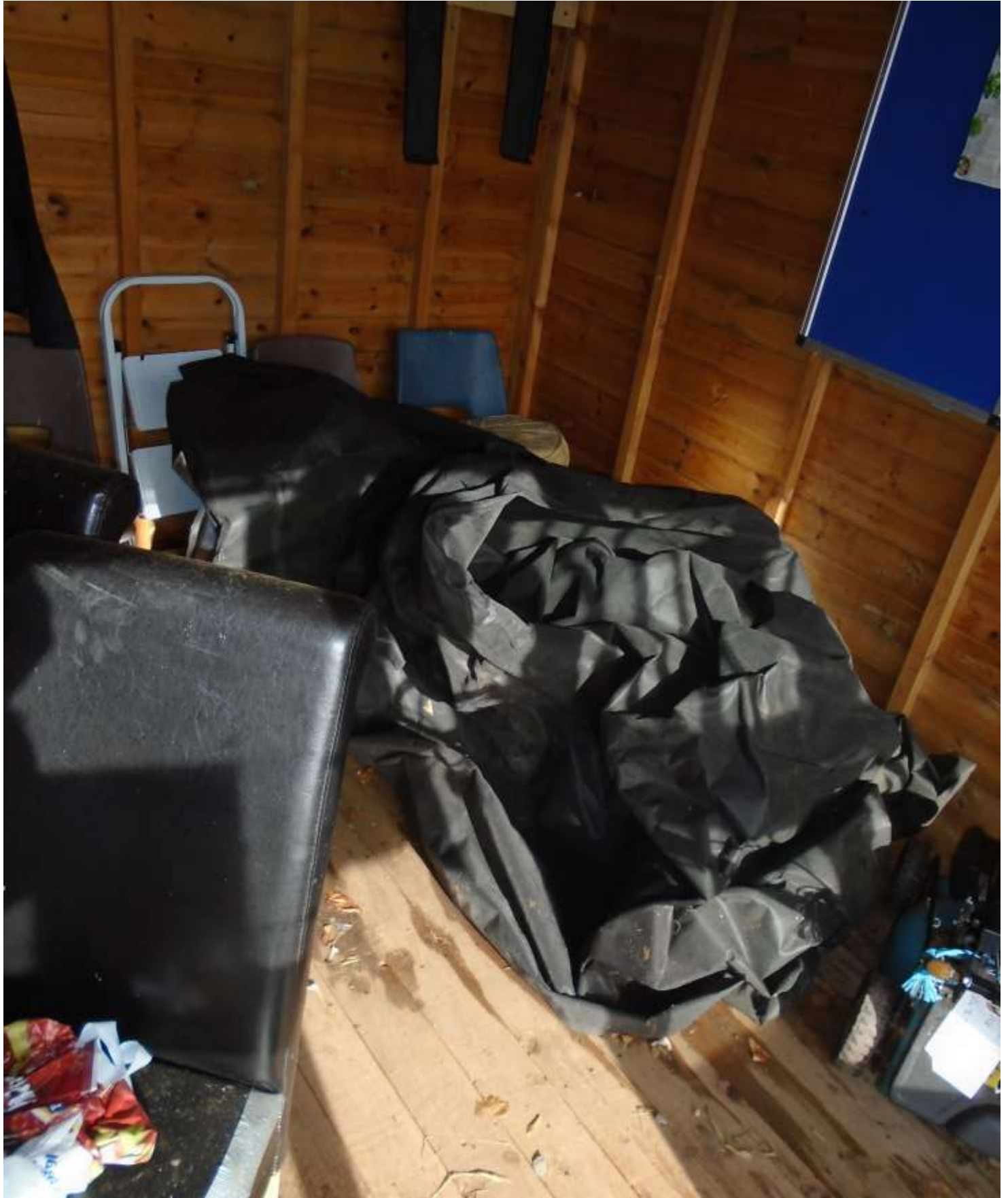


Outdoor Classroom undergoing major clear out!!.....

The outdoor classroom area within the school allotment is an area that requires a major clear up so that this space can be utilised by the whole school.....

There are so many areas of the curriculum that can be taught in the outdoors, so the sooner this area gets tidied up the better.....

February half term has seen the start of this clearance.....



More clearance required.....



Old seed packets, a grass box with old rotten grass cuttings and a watering can marked with weed killer, not the kind of things wanted in a school garden area.....

Classroom cleared out.....



Clearance continuing....



Classroom ready for set up
now.....



Spring flowering bulbs.....



Broad Beans.....

