

A guide to joining our Nursery



Keresley Newland Primary School
Grove Lane,
Keresley End,
Coventry
CV7 8JZ

02476 33 24 34

<https://www.knpa.co.uk/>



Starting Nursery

Starting Nursery marks a new and exciting stage of life for both you and your child. This booklet has been put together to provide you with some information about our Keresley Newland Early Years unit. We hope this will help you to prepare your child for Nursery and go some way towards answering any questions which you may have.

Meet the team



Mrs Penlington
Headteacher



Mr Astley
Deputy
Headteacher



Mrs Dyson
Assistant
Headteacher



Mrs Hayward
Early Years Leader and
teacher



Mrs Loughran
Early Years Teaching
Assistant



Mrs Barnes
Teaching Assistant



Nursery Sessions

Children are able to come to the Nursery from the term after their third birthday. We offer part time places for five sessions a week in the mornings. We also offer full time sessions too, for parents working more than 16 hours a week. There will be a maximum of 30 children in each session and the session times are;

Morning session: 8.45 am - 11.45am

Full day session 8.45am -3.15pm



(Full time children will bring a packed lunch to eat or you can pay for a school dinner.)

We feel it is really important to arrive and collect your child on time. The children are only here for a short time and we really want them to make the most of their time with us.

If you will be unavoidably late, please telephone so that we can explain this to your child. Please also notify us if someone other than yourself will be picking your child up.

Attendance

Once a place has been offered and your child has had time to settle in, regular attendance is expected so that maximum benefit can be gained by your child. Please let us know if your child is likely to be absent for an extended period of time e.g. due to illness or family circumstances.



Keresley Newland Early Years Unit



In Sunnyside class, the children have the opportunity to spend some time with the reception children, whilst also having their dedicated nursery learning sessions. This means that the children develop close relationships with all of the children in our unit and have opportunities to learn alongside their older peers during continuous provision times.



Our environment consists of several areas, which provide opportunities for both inside and outside learning. Each area provides different learning experiences and challenges for the children to access.



Our finger gym



Phonics Area



Maths Area



Discovery Area



Lovely listening Area



Reading Area



Mark Making Area



Our home corner



Our Outdoor Classroom



In the garden area children can access a variety of wheeled vehicles, a climbing frame, slides and small equipment e.g. balls, hoops, stilts and balance boards. These provide them with lots of physical challenges. We also have a mud kitchen, a role play house, a reading garden shelter and performance cubes, where your child can express themselves through role play, stories, dance and or song.



All areas of learning (both indoors and outdoors) are carefully planned with active-play based activities in mind, as play is a key way in which children learn. We call these our independent challenges. We provide a bright, stimulating environment and resources are well organised with clearly labelled learning intents. We encourage the children to take pride in their environment, being responsible for tidying particular areas and looking after and sharing everything they use.

Planning

We offer a rich and varied curriculum in a safe, stimulating environment. We understand that children develop at their own pace but we believe with encouragement and opportunity they will reach their full potential. We understand that children learn best when they are happy, safe and secure.

With this in mind, we plan for learning to take place both indoors and outdoors. Our curriculum is planned around the children's interests and topics which are suitable for their stage of development. Our half termly curriculum learning plans are displayed on our website. We also provide children with home learning tasks each week.

Clothing

We would like the children to wear our school uniform which consists of a dark navy Keresley Newland logo v-neck sweatshirt or cardigan, a light blue cotton shirt and a pair of grey trousers or a grey skirt. In addition the children will wear a navy and grey striped school tie. Please also ensure your child wears strong, safe black shoes which they can manage independently. (Our little ones find laces tricky at this stage!) We do ask that you send your child with a spare set of clothes just in case of accidents. These can be kept in a bag and hung on their coat peg.

We do endeavour to make sure all items of clothing are covered when children are either painting or gluing. However sometimes accidents do happen! The paint we use is washable and should come off when washed in warm soapy water at home.

Please help us to stop items becoming lost by making sure that **all your child's clothes and shoes are clearly labelled.**

Toys and jewellery

As children are often upset if their toy is lost or broken, it would help if your child kept their toys at home. It is also not advisable for children to wear jewellery to school either for safety reasons.



Starting Nursery

Our Transition Process

Starting Nursery is a new and exciting experience. However, we understand that both parents and children can sometimes feel apprehensive about the changes ahead. At Keresley Newland Nursery we aim to make this transition as smooth and as positive as possible.

Before starting the Nursery, you and your child will be invited to a Golden ticket visit. This visit is designed to be a 'family time' in which you and your child can familiarise yourselves with the Nursery staff and environment. Our Early Years staff will be on hand to answer any of your questions or queries. Please do not hesitate to ask!

Home visits

We offer home visits to you and your child to help with the settling in process too. Until now, you have been the most important part of your child's life and during this time you have become an expert on your child. We hope that you will let us learn from your experiences and allow us to build upon them in order to help your child settle into our nursery. This important partnership starts with a home visit (which may be done virtually with current restrictions), where we can start to get to know you and your child in their own environment. During the home visit we can talk about your child, their needs and interests and answer any questions which you may have before they begin their first day with us.



Your child's First Day



As some children will find staying at their new setting for the whole morning too much, we provide a staggered transition process.

- For the first week, new starters will stay for the first hour until 10am.
- During their second week, we invite them to stay for the whole morning, again giving them the chance to settle in to our routines.
- Once they are settled, they can stay for the whole day from their third week.

Every child is unique so we will work together to ensure your child's transition is as smooth as possible.

On arrival, children hang up their coats and put their water bottle in our drinks box. They will then join their friends for independent challenge time, during which they take part in independent play activities before registration time.

To keep you informed you can access our Fairytale Phase - Early Years learning page on our school website. We also have a weekly school newsletter. We use these along with letters to keep you informed of the topics and any events that will be happening.



What will my child be doing at Nursery?

In our Early Years Unit, Nursery and Reception work closely together, following the statutory Foundation Stage curriculum.

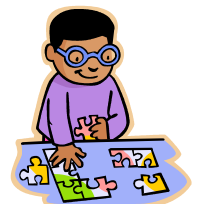
This is organised around the seven areas of learning,

There are three core areas:

Personal, Social and Emotional Development

Communication and Language

Physical Development



Four specific areas which are:

Literacy
Mathematics
The World
Art and Design

Each learning session is carefully planned to give children the opportunity to take part in a range of play based activities, which encourage the development of skills, knowledge and understanding in all seven areas of learning.

These could include;

- Sand or water play
- Using construction toys
- Creative and Role play activities
- Listening to and joining in with music songs and rhymes
- Using the computer or programmable toys
- Playing with small world animals, people or vehicles
- Completing puzzles and games
- Tactile play with materials such as pasta and play dough.

The children will also take part in activities to help them develop their physical skills and coordination in our outdoor area.

Group Time

During each Nursery session your child will spend some time taking part in nursery group time sessions, where they may talk about ideas in relation to our topics, learn sounds, sing or share a story.



Your child's progress

We operate an 'open door' policy, so you can talk to a member of nursery staff when you drop off or pick your child up. If you need to talk to a member of staff in private, please arrange a meeting with the appropriate member of staff.

We encourage you to share any concerns with us as early as possible, so that we can work together to resolve matters and provide any support that may be needed.

Our Early Years staff will make regular observations of your child in Nursery and keep a record of their progress and development by completing the Foundation Stage Profile, which is linked to the seven areas of learning in the Foundation Stage Curriculum. You will have the opportunity to discuss your child's progress at parent's

consultations which are held throughout the year. We record observations of your child's learning and you will receive a final school report in the Summer term.

Independent Challenge Books

Each child in Nursery has an independent challenge, which tells a story of their learning. After completing some of our group learning activities or during independent challenge time, photographs or completed activities will be added to their Independent Challenge books.

Over time, these books will become a celebration of your child's achievement and progress, recording activities that they have completed both at school and with the help of friends and family at home. The Independent Challenge books, will therefore become a 'keepsake of Memories' during their time in Nursery.

Their books will include;

- Photographs of your child showing significant learning or achievements.
- 'Catch a quote' slips, recording what your child has said during an activity.
- Examples of your child's work and comments they have made about them.
- Comments from parents, carers, child minders etc of significant new learning seen outside of school

What can I do to contribute to my child's Independent Challenge book?

We would love to hear about any significant new learning you have seen at home. Please complete a 'News from home' slip. We can then celebrate your child's achievement in school and add this to their independent challenge books.



Home Learning

The children are able to access 'MyON' and 'Teach your monster to read', which are available to support your child's learning. 'MyON' has a library of books the children can access, for you to share or for the programme to read to them. 'Teach your monster to read' introduces the children to phonics in a fun interactive way. We also set regular home learning tasks, related to our learning for the week, to further reinforce our nursery learning through teams and our class email.

Drinks and snacks

Each day your child will take part in our snack time. Our nursery children are provided with milk and a piece of fruit. Snack time is a chance for the children to share a social time with their peers and take part in fun learning activities too. Please advise us of any allergies your child may have so we can cater for their needs.

We hope that this guide has answered questions about our setting. Please feel free to contact the school directly for further details. <https://www.knpa.co.uk/>
02476 33 2434